

An aerial photograph of a city skyline, likely London, showing a mix of modern glass skyscrapers and older brick buildings. In the foreground, there is a large green park with a playground and a winding path. The sky is blue with scattered white clouds.

SBWP

**SOUTH BANK AND
WATERLOO PARTNERSHIP**

COVID-19 Recovery Plan

**Working together for a safe, successful
and sustainable recovery**

Contents

Introduction	3
Background	4
Our top five priorities	6
Our vision and themes for recovery	10
Reopening plan by sector	21
Working together	22

Introduction

The South Bank and Waterloo area of Lambeth and Southwark has long been one of central London's most important economic and cultural centres. Besides major corporations, universities and health care plus international tourist and cultural attractions, the area hosts a thriving range of small and medium sized businesses. Alongside these are a number of significant residential communities and local facilities such as schools and religious buildings.

The London Plan identifies South Bank and Waterloo as an Opportunity Area, capable of sustaining economic growth for many years. The area generates over £5bn of value per annum, with 30 million visitors spending over £300m a year. It is now one of London's most important economic engines with annual business rates income to the local authorities in excess of £50m.

The COVID-19 lockdown has had a devastating impact on the area's economy. While activity never ceased completely, due to the presence of St Thomas' Hospital, many shops, businesses and attractions have lost several months of trading and face an ongoing uncertain future.

The area relies on a set of interconnected activities, an 'ecosystem' of businesses that are interlinked with the cultural hub. The economy will remain under threat until all parts of the 'ecosystem' are fully up and running again.

Lambeth and Southwark Councils, together with the Business Improvement Districts (BIDs) for the area, the local MPs and other public, community and private sector partners have worked together throughout the crisis, both to manage the immediate impacts and to start thinking about how best to support the area's recovery – in economic, community and environmental terms. This plan sets out what we have been doing together and what we will continue to do to support local, national and international businesses in the area alongside our residents and communities to be safe, clean and COVID-19 secure.

This Recovery Plan was prepared in July 2020 for the South Bank and Waterloo Partnership, chaired by local MPs Florence Eshalomi and Neil Coyle. Updates on revisions and progress are available at www.sbwpa.org.uk



BACKGROUND

Managing the crisis

The COVID-19 pandemic has had profound impacts on our communities. It has caused illness, death, disruption, financial hardship and worry for residents. Our schools and businesses have had to close. Our hospital and our key workers have worked tirelessly throughout to support those who fell ill, provide essential services and food. Throughout the pandemic, the partners in the area, including our community and voluntary organisations, the businesses and their representative organisations, our universities, the local councils and the NHS have worked together to deal with the impacts. Together we have also been planning for recovery.





Previous page: A member of South Bank Patrol Team in action. Left: Hospitality venues like the Hercules pub reopened with social distancing. Bottom: The Young Vic theatre celebrates its 50th birthday by launching an art installation entitled The Unforgotten, featuring images of (left to right) Mary Seacole, Marsha P. Johnson and Ulric Cross.

Planning for recovery

We set out how we are planning to support the reopening and recovery of the South Bank and Waterloo area. We have identified a vision that's based on partners working together to achieve a safe, successful and sustainable recovery. Our plan is organised around six themes to support businesses, local people, and communities in Lambeth and Southwark. For each theme, we have set out a series of actions either taken, underway, or planned for the future.

We have worked with business to assess impacts. Some large businesses have been resilient to the changes – with office workers in the corporate and university sector able to relocate to working from home and continue business with limited interruptions. Others face a perilous future if they are unable to reopen safely before too long.

This is a particular concern for the major cultural organisations with performing spaces: Southbank Centre, National Theatre, The Old Vic, and Young Vic.

Small and medium sized organisations have experienced a similar mix of fortunes with all but essential shops closing, but some businesses being supported by government furlough schemes and discretionary and non-discretionary grants. Most small businesses will need to reopen to guarantee their futures, but those relying heavily on footfall or passing trade will find it difficult to trade at levels they have historically enjoyed. Hospitality businesses, such as cafes and restaurants, need help reopening, potentially relocating tables and chairs outside.

Our actions need to sit within the context of Government guidance and changes to legislation and regulation. This plan sets out how the partners involved in the South Bank and Waterloo Partnership aim to support those that wish to reopen to do so safely, in a timely way and to communicate clearly and regularly about this with local residents and the wider London community.

This collaborative work will be co-ordinated through the multi-agency South Bank and Waterloo Management Group and reported regularly to the South Bank and Waterloo Partnership and Forum which are chaired by the area's two MPs.



OUR TOP FIVE PRIORITIES



Implementation of Local Outbreak Control Plans



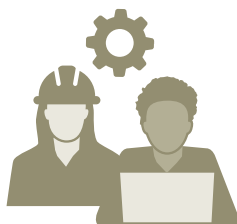
Supporting businesses to reopen as soon as it is safe to do so



Funding and resources for cleaning, patrolling and urban management



Immediate and medium-term public realm and transport improvements



Starting to plan employment and training support programmes

Opposite page: Bernie Spain Gardens.
Right: New signage in place at St Thomas' Hospital. Below: Enjoying outdoor socialising on Blackfriars Road. Bottom: Stallholders at Lower Marsh Market.



© Guy's and St Thomas' NHS Foundation Trust



© We Are Waterloo

1 Implementation of Lambeth and Southwark's Local Outbreak Control Plans

The Lambeth and Southwark Directors of Public Health are leading the development of the local outbreak control plans and have started consultation and discussion with local stakeholders.

2 Supporting businesses to reopen quickly as soon as it is safe to do so

This will require continued information and support from the Councils and BIDs to local businesses within the framework set by the most recent Government guidance and proposed legislation, including the ability where necessary to flex funding streams.



© We Are Waterloo

3 Agreeing funding and resources for cleaning, patrolling and urban management on the South Bank and a framework for further investment on key local projects

A review of available resources from Section 106 agreements, BID resources and voluntary contributions is underway. Discussions have begun between Lambeth Council and South Bank and Waterloo Neighbours (SoWN) on future priorities for investment and how they can be funded. Similar discussions with Southwark should take place.





© Transport for London

Opposite page: South Bank Clean Team in action. *Left:* Streetspace pavement widening scheme outside Waterloo Station. *Bottom:* Hospitality venues starting to open up following distancing guidelines.

4 Immediate and medium-term public realm and transport improvements, in particular to the South Bank Spine Route

In addition to immediate measures taken at Waterloo Road and outside Waterloo Station, Lambeth Council is planning to implement as soon as possible the pedestrianisation of Concert Hall Approach and agree a clear programme of further works.

5 Starting to plan employment and training support programmes

Forecasts point to sharp increases in unemployment as immediate economic support programmes are phased out and preparations need to begin for how local businesses and organisations might help deliver likely further government employment, skills and learning initiatives.

© Skylon



OUR VISION AND THEMES FOR RECOVERY

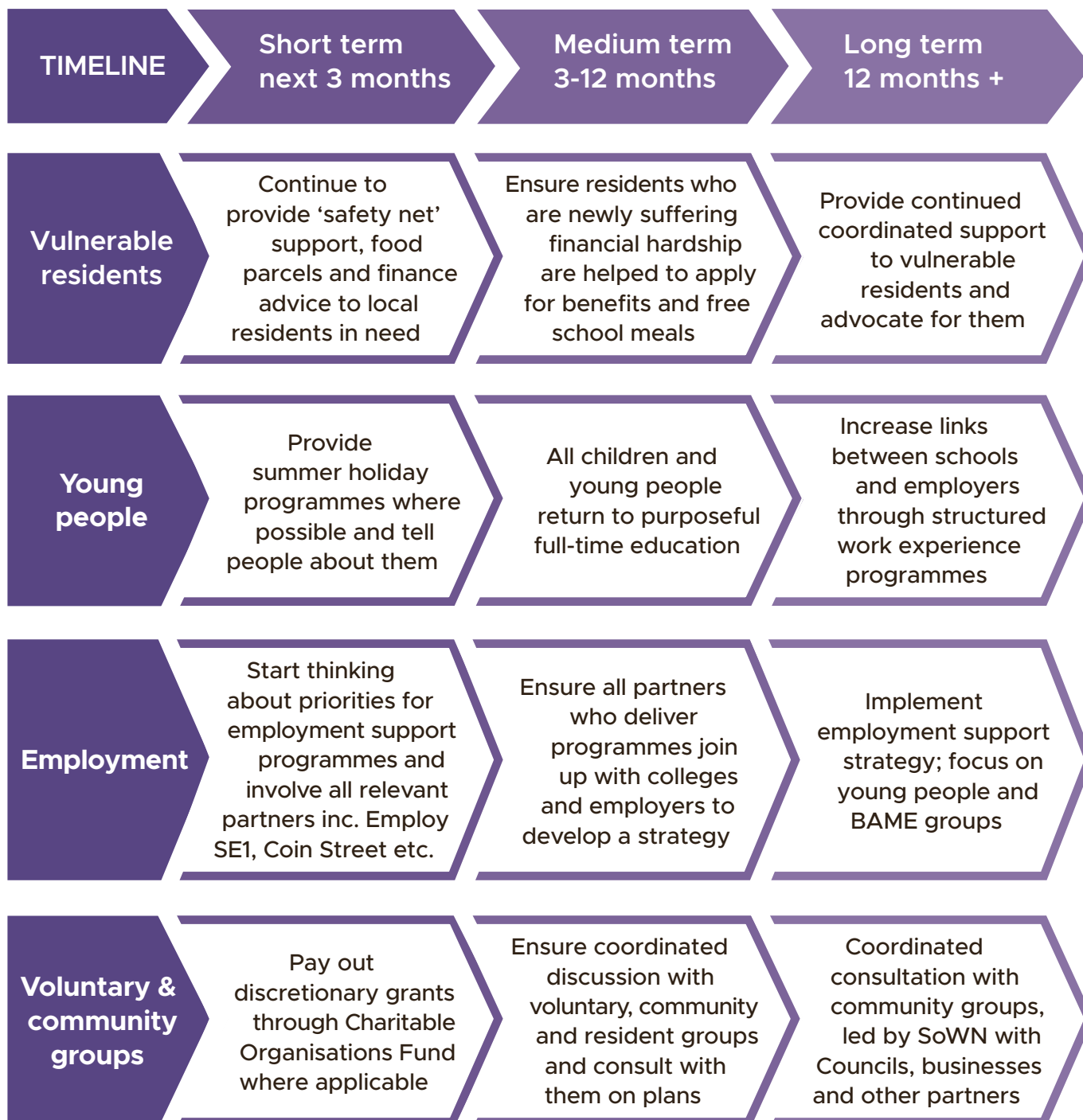


SIX THEMES FOR RECOVERY



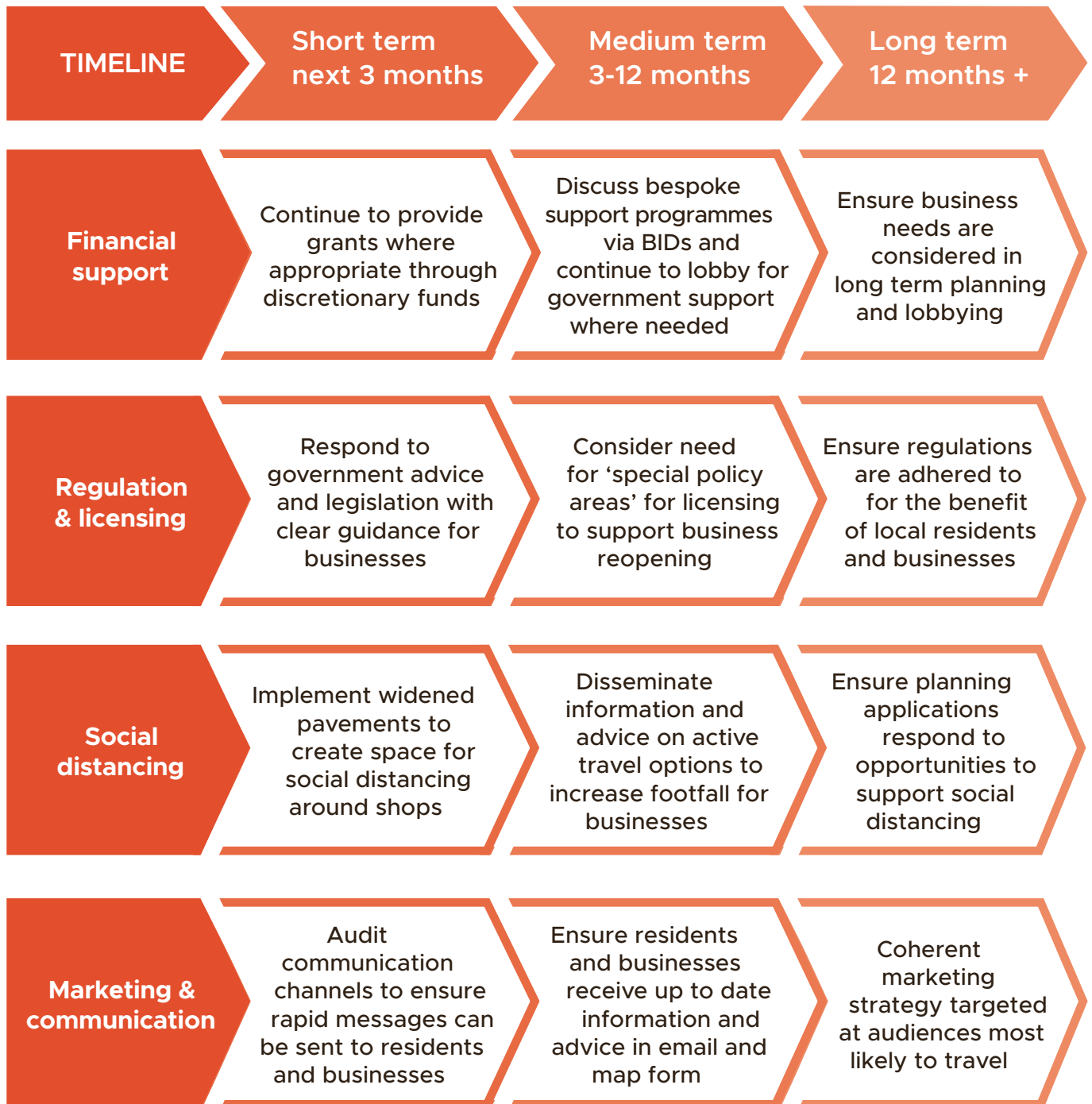


THEME 1: Supporting our communities





THEME 2: Supporting our businesses



Right: The Vaults performance space in the famous Leake Street graffiti tunnel. Below: Lambeth Council's ELEVATE programme supports diverse talent in the creative industries. Below right: London Eye, Shell tower and County Hall lit up as part of a nationwide thank you to the NHS. Bottom: Social distancing at South Bank's second hand book market.



© Antoine Bouchet



© Lambeth Council



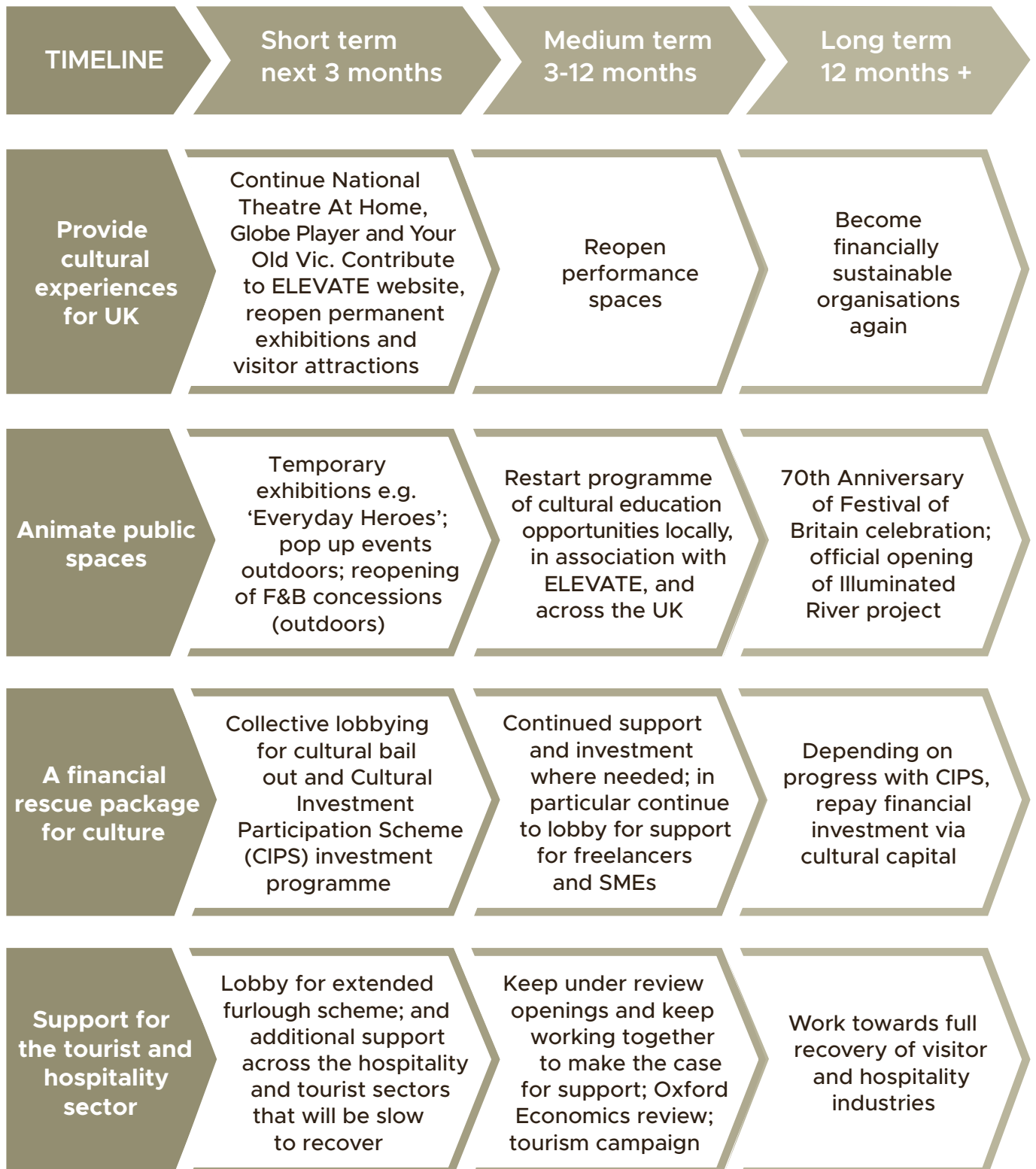
© Merlin Entertainments



© Mickey Lee

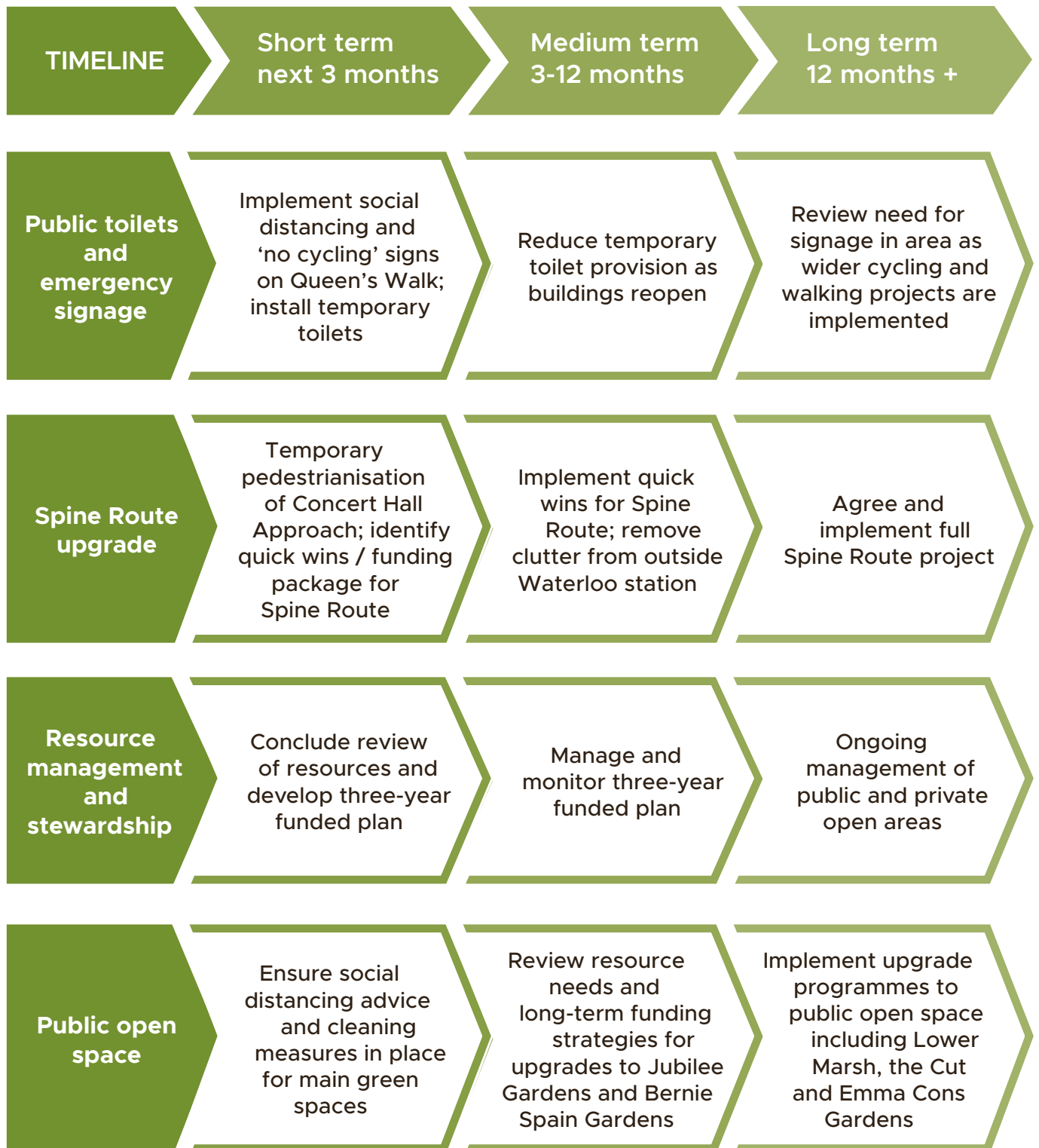


THEME 3: Supporting our visitor & cultural sectors





THEME 4: Managing our resources & public realm





© Jubilee Gardens



© Mickey Lee



© Mickey Lee



© We Are Waterloo



© West 8

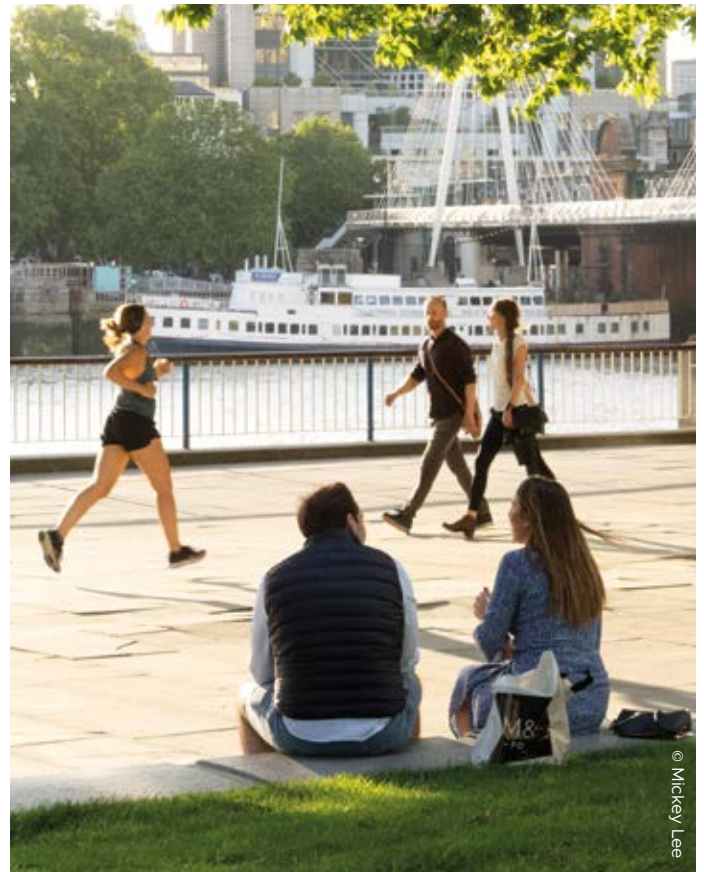
Left: Design concept for improvements to Bernie Spain Gardens North with pollinator-friendly planting and new trees. Above left: Signage along South Bank and in Jubilee Gardens reminding people to practice social distancing. Above right: A new pocket park on Baylis Road. Top right: Temporary toilets underneath Hungerford Bridge.



© London Waterloo



© Mickey Lee



© Mickey Lee

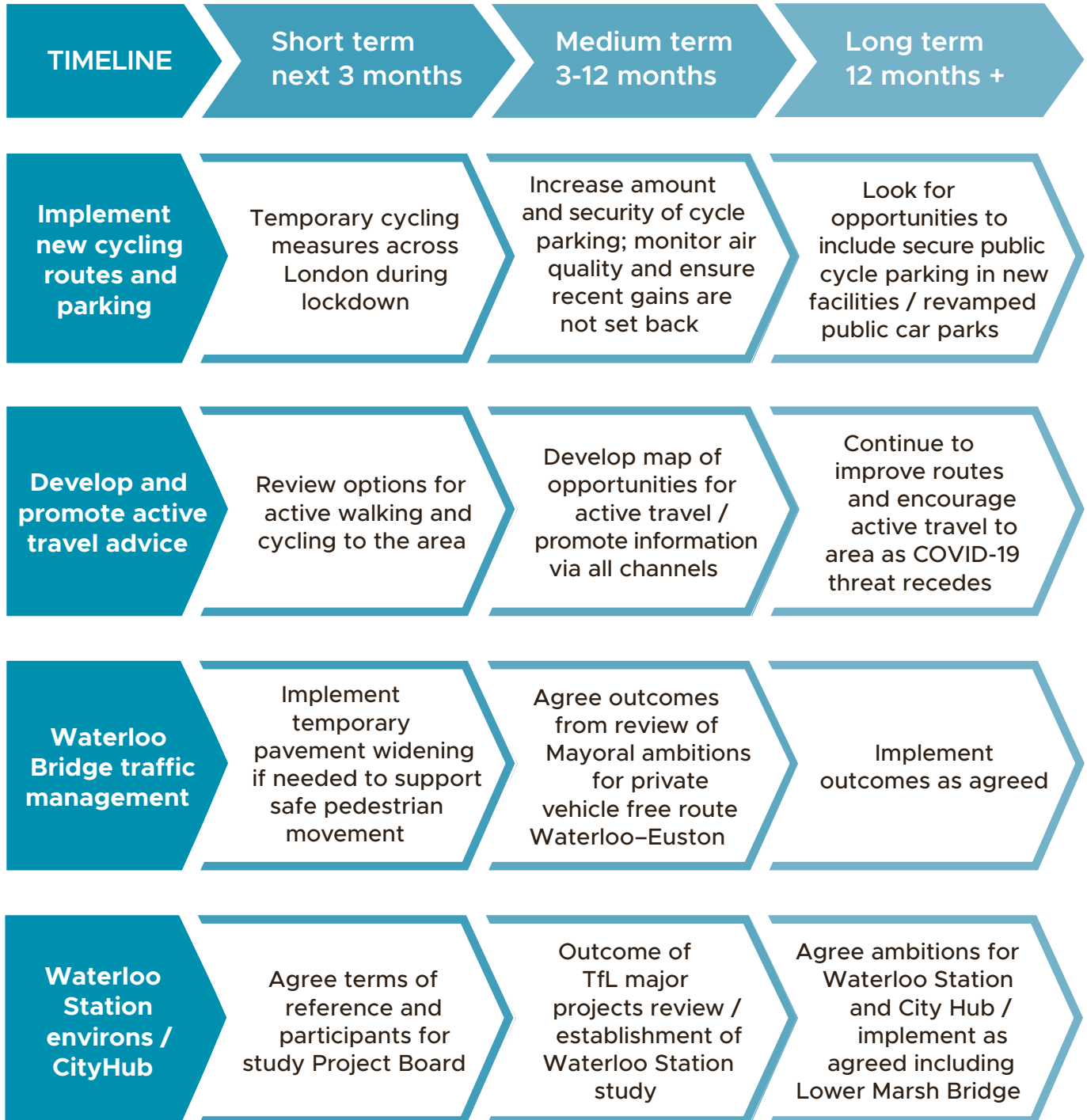


© Lambeth Council

Left: Cyclist using the new segregated cycle lane on Baylis Road.
 Middle left: Cycling on quiet back roads such as Roupell Street.
 Above: Joggers and pedestrians enjoying The Queen's Walk.
 Top: Measures at Waterloo Station to encourage face coverings and social distancing.

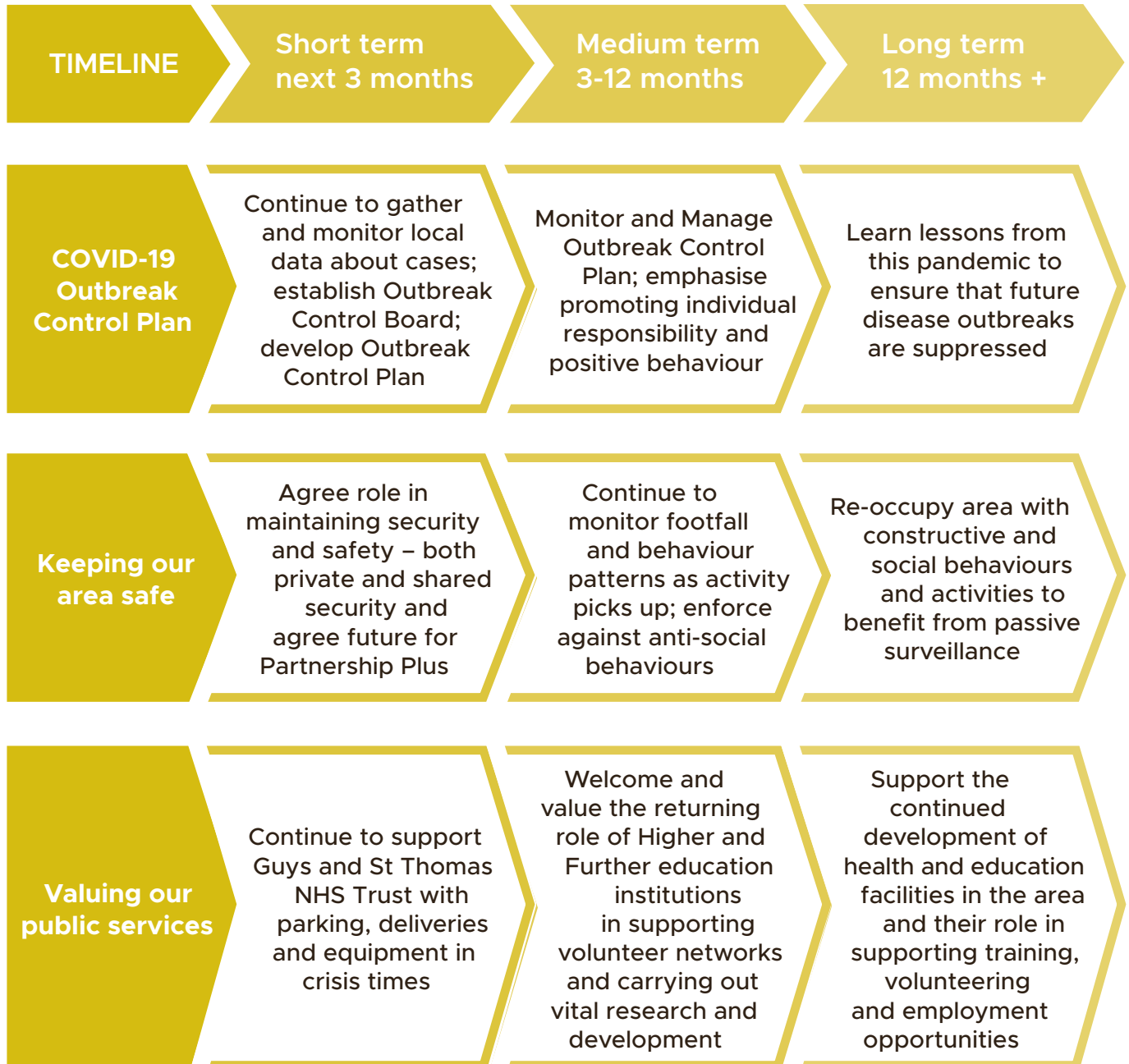


THEME 5: Supporting safe and active travel to the area





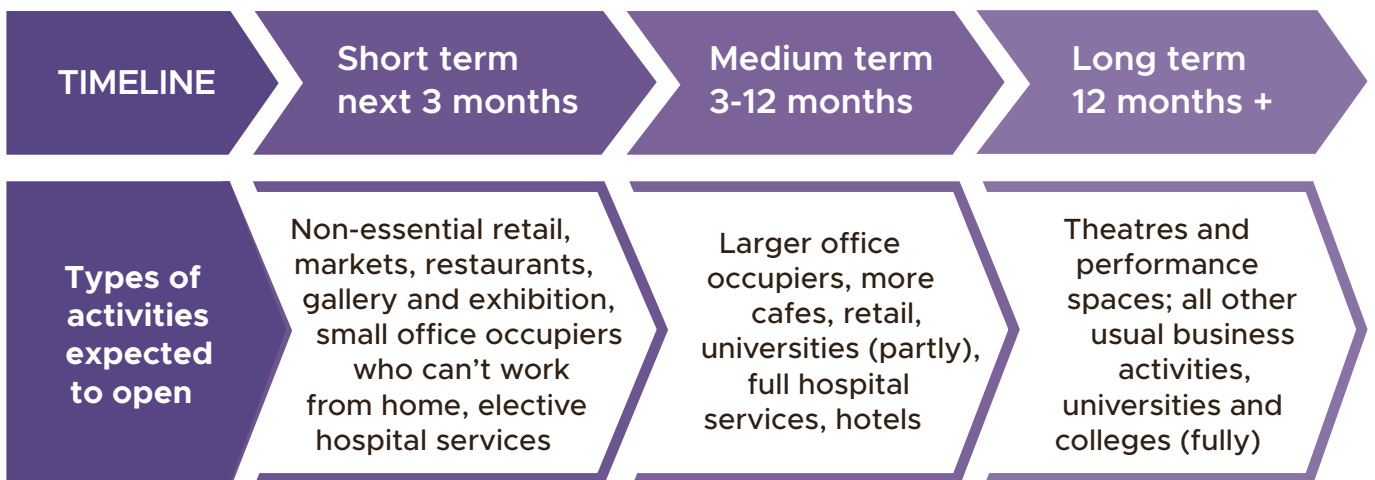
THEME 6: Protecting people / planning for outbreaks





Mural under Waterloo Bridge paying tribute to NHS 'superheroes' by artist Lionel Stanhope

Re-opening plan by sector (assumed July 2020)



WORKING TOGETHER

South Bank and Waterloo Management Group

This plan has been developed through joint discussions between the following parties, as members of the South Bank and Waterloo Management Group:



SOUTH BANK EMPLOYERS' GROUP



The South Bank and Waterloo Management Group (SBWVG) was established in May 2020 to support the work of the South Bank and Waterloo Partnership. These arrangements have been supported by a regular meeting of major landowners in the area to keep abreast of developments and monitor and respond to increased visitor numbers.

The purpose of this recovery plan is to ensure that reopening is safe, successful and COVID-19 secure. The Partnership has demonstrated real strength dealing with the crisis and won't hesitate again to manage whatever action is needed up to local lockdown in line with the COVID-19 Outbreak Plan. Some examples of partnership working to date include identifying emergency parking to support key workers in lockdown and putting together a funding package around temporary public toilet provision.

Lambeth Council, SBEG and Merlin have together reviewed the ongoing resource needs of the area and funding available to support services – this review is due to conclude in July 2020.

Lambeth Council has met with SoWN, SBEG and WAW to discuss how to ensure Community Infrastructure Levy (CIL) and Neighbourhood Community Infrastructure Levy (NCIL) spending reflects local resident and community priorities and will publish the outcomes of this process as soon as possible. SBWVG will continue close dialogue with community partners on all actions in this plan.

Contact details

ELEANOR PURSER / SARA WALLER

London Borough of Lambeth
Co-Chair SBWVG
epurser.swaller@lambeth.gov.uk

JOHN LANGLEY

South Bank and Waterloo Neighbours
Co-Chair SBWVG
mail@sowneighbours.org

DAN TAYLOR

London Borough of Southwark
dan.taylor@southwark.gov.uk

NATALIE RABEN

WeAreWaterloo Business
Improvement District (BID)
natalie@wearewaterloo.co.uk

NIC DURSTON

South Bank BID /
South Bank Employers' Group
nic.durston@southbanklondon.com

